



DUST COLLECTORS AND FUME EXTRACTORS ACCESSORIES FOR JEWELRY APPLICATIONS



LED Magnifier / Debris Shield with Magnetic Base

Illuminates work area and improves visibility

Item #: AA555

Dimensions: 7 in (18 cm) diameter, 14 in (35 cm) arm

Shipping Weight: 2 lb (1 kg)

Electrical: 120-240 V, 0.3 A

- » 3 Functions: illumination, 2X magnification and debris shield
- » LEDs around perimeter of magnifier provide ideal lighting for work area
- » Integrated On/Off switch
- » Flexible arm extends 14" from base
- » Attaches to any ferromagnetic surface (iron/steel)
- » Included: 120-240 V adapter (#AA193), steel plate with 4 wood screws (#H125) if metal surface not available
- » Optional: 12 in (30 cm) arm extension (#AA429)

Magnifier / Debris Shield with Magnetic Base

Better visibility and protection from debris

Item #: AA427-12

Dimensions: 7 in (18 cm) diameter, 14 in (35 cm) arm

Shipping Weight: 2 lb (1 kg)

- » Dual purpose: 2X magnification and debris shield
- » Flexible arm extends 14" from base
- » Attaches to any ferromagnetic surface (iron/steel)
- » Included: steel plate with 4 wood screws (#H125) in case metal surface not available
- » Optional: 12 in (30 cm) arm extension (#AA429)





LED ClearView, Illuminated Workbench Containment Box

Connects to dust collector / purifier via 3 in diameter hose
Item #: AA004-3L

Dimensions (HxWxL): 15x15.5x14.25 in (38x39x36 cm)
Shipping Weight: 17 lb (8 kg)
Electrical: 100-120 V, 60 Hz, 0.3 A

- » Keep polishing compounds away from your breathing zone. Contain all polishing debris within enclosure
- » Bright LED illuminated, ideal use with lathes
- » Connect to your dust collector, 3 in diameter hose
- » Side openings suited for working with a lathe on either side. Easily removable front rubber curtain.
- » Includes cap to block rear inlet so you can capture beneath your counter
- » Included: LED light (#AA190), 120V power adapter (#AA193), 3 in diameter inlet in rear (#H162)
- » Optional: 3 in diameter SlideValve installs inside (#AR197), ASV (#AA424 for 3 in hose connection), magnifier (#AA404) installed on front, magnetic magnifier (#AA427-12), source capture connector (#AA426), steel floor with a 3 in diameter connection at the bottom (#AA431-3)

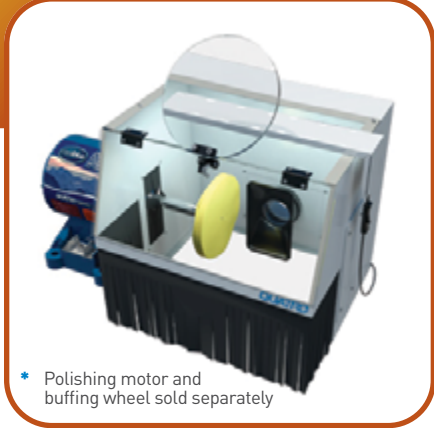
* Polishing motor and buffing wheel sold separately

ClearView Plus, for polishing & grinding using conventional dust collectors

LED containment box with magnifier
Item #: AA00430L-MS00

Dimensions (HxWxL): 15x15.5x14.25 in (38x39x36 cm)
Shipping Weight: 20 lbs (9 kg)
Electrical: 100-120V, 60 Hz, 0.3A

- » Keep polishing compounds away from your breathing zone. Contain all polishing debris within enclosure
- » 8 in hinged magnifier, 2x magnification; if you don't need it, move it out of the way
- » Bright LED illuminated, ideal use with lathes. Source capture nozzle for enhanced debris capture
- » Connect to your dust collector, 3 in diameter hose
- » Side openings suited for working with a lathe on either side. Easily removable front rubber curtain
- » Includes cap to block rear inlet so you can capture beneath your counter
- » Included: LED light (#AA190), 120V adapter (#AA193), 2x magnifier (#AA404), source capture connector (#AA426)
- » Optional: 3 in diameter SlideValve installs inside (#AR197), ASV (#AA424 for 3 in diameter hose connection), steel floor with a 3 in diameter connection at the bottom (#AA431-3)



* Polishing motor and buffing wheel sold separately



ClearView Plus ASV, for polishing and grinding using PGR & CollectAll

LED containment box with magnifier and ASV
Item #: AA00433L-MSA0

Dimensions (HxWxL): 15x15.5x14.25 in (38x39x36 cm) · Shipping Weight: 17 lb (8 kg)
Electrical: 100-120 V, 50/60 Hz, 0.3 A

- » Keep polishing compounds away from your breathing zone. Contain all polishing debris within enclosure
- » 8 in hinged magnifier, 2x magnification; if you don't need it, move it out of the way
- » Connect to your dust collector, 3 in diameter hose. Source capture nozzle for enhanced debris capture
- » ASV (Automatic Start Valve), starts/stops your dust collectors from inside the ClearView
- » Bright LED illuminated, ideal use with lathes, with side openings suited for working on either side
- » Automatically starts/stops the following units: PS6, PGR SuperFlow, CollectALL (CA), JetStream Brushless (JTB), SolderPure (SPB)
- » Included: LED light (#AA190), 120V power adapter (#AA193), ASV (Automatic Start Valve), 2x magnifier (#AA404), source capture connector (#AA426)
- » Optional: Steel floor with a 3 in diameter connection at the bottom (#AA431-3)

* Polishing motor and buffing wheel sold separately

LED AirBox, Illuminated Desktop Containment System

Keep a clean and healthy work environment by containing dust, odor and debris
Item #: AA266-1S+, Space-saving LED AirBox
Item #: AA266-2S+, Full-size LED AirBox

Dimensions (HxWxL): 14.5x24x17.5 in (37x61x45cm) (Space-saving Box)
Dimensions (HxWxL): 24x29x20 in (61x74x51cm) (Full-size Box)

- » Bright LED illuminated, with ON/OFF switch
- » LED can be installed on top or either side of box
- » Hinged doors swing up and away for easy access
- » Powder coated heavy duty steel
- » Connect to your dust collector via 1.5", 2", 2.5" or 3" diameter hose.
Please specify required diameter when placing the order.
- » Included: LED power adapter. Please specify country/voltage when placing the order.
- » Also available with integrated Automatic Start Valve or integrated Manual Slide Valve



LED ClearView with Drawer, for polishing & grinding

LED containment box with precious metals drawer
Item #: AA066-3L-G-NL

Dimensions (HxWxL): 17x15.5x14.25 in (43x39x36 cm)
Shipping Weight: 30 lbs (14 kg)
Electrical: 100-120V, 60 Hz, 0.3A

- » Keep polishing compounds away from your breathing zone.
- » Contain all polishing debris within enclosure or in drawer
- » Bright LED illuminated, ideal use with lathes, with side openings suited for working on either side
- » Connect to your dust collector, 3 in diameter hose
- » Includes cap to block rear inlet so you can capture beneath your counter
- » Included: LED light (#AA190), 120v power adapter (#AA193), drawer with grille (AA067-G-NL)
- » Optional: SlideValve (#A104C), ASV (#AA424 for 3 in hose connection)

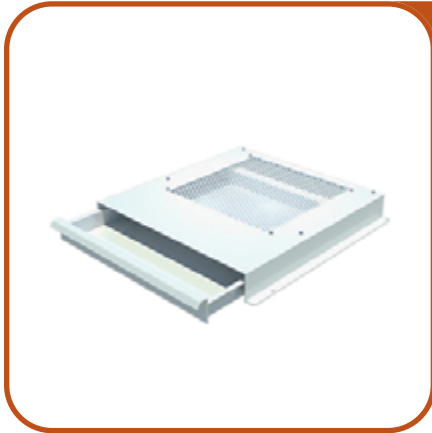


Precious Metals Drawer, installs beneath ClearView

Precious metals fall through the grille into drawer below
Item #: AA067-G-NL

Dimensions (HxWxL): 2x16.5x17.25 in (5x41x44 cm)
Shipping Weight: 13 lbs (6 kg)

- » ClearView secures directly onto the drawer
- » Drawer includes grille as shown
- » Screws to secure LED ClearView included
- » Powder coated heavy-duty steel
- » Included: Grille (AR096)

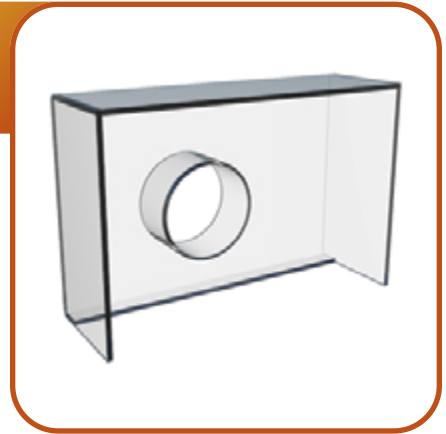


FumeTrap

Source capture accessory helps keep contaminants away from breathing zone
Item #: H277

Dimensions (HxWxL): 8x12x6 in (20x31x15 cm)
Shipping Weight: 3 lb (1 kg)

- » Connects to MonoPure desktop odor eliminator
- » Contains odors within enclosure
- » Plexiglass, 4 in diameter connection in back



Goldmat, for all jewelry

Don't let your gold "walk" out your door

Item #: A077 (24x36")

Item #: A078 (24x46")

Dimensions (WxL): A077, 24x36 in(61x91 cm) / A078, 24x46 in(61x117 cm)
Shipping Weight: A077, 10 lbs (5 kg) / A078, 11 lbs (5 kg)

- » 4 mats per box, each mat contains 30 pull-away sheets
- » Fine precious metals that are not captured by dust collector fall to the floor
- » These particles stick to employees shoes, and can be transported out the door
- » Place the GoldMat at your exit so employees step onto it before leaving the premises
- » Sticky surface pulls, captures and retains gold and other precious metals from shoes



Workbench Polishing Capture Arm, for polishing & grinding

Wide nozzle for units using 3 in diameter hose
Item #: AA033

Shipping Weight: 5 lbs (2 kg)

- » When not in use, simply move it out of the way
- » Extends to 24 in long, supports its own weight
- » Table bracket to support arm included
- » Use with PGR, Velocity, SolderPure, CollectAll and other equipment with 3 in diameter hose
- » Hose not included
- » Included: Jewelers table bracket, connects to 3 in diameter hose (#M041), Plexiglass wide nozzle (#AA043)
- » Optional: Flat table bracket (#H255), connects to 3 in diameter hose, SlideValve (#H397), installs anywhere on the arm

Workbench Polishing Capture Arm, for polishing & grinding

Wide nozzle for units using 1.5" and 2" diameter hose
Item #: AA324-R2

Shipping Weight: 5 lbs (2 kg)

- » When not in use, simply move it out of the way
- » Extends to 24 in long, supports its own weight
- » Table bracket to support arm included
- » Use with Basic, GoldVault, JetStream, or PS6 and other equipment with 1.5 in diameter hose
- » Hose not included
- » Included: Jewelers table bracket (#AA812-J), connects to 2 in diameter hose, plexiglass wide nozzle (#AA043), and fitting for 1.5 in hose
- » Optional: Flat table bracket (#M410), connects to 1.5 in diameter hose (#M410), SlideValve (#H397), installs anywhere on the arm



Workbench Capture Arm, for polishing & grinding

Narrow nozzle for units using 1.5" and 2" diameter hose
Item #: AA323-R2

Shipping Weight: 5 lbs (2 kg)

- » When not in use, just move it out of the way
- » Extends to 24 in long, supports its own weight
- » Table bracket to support arm included
- » SlideValve not included (order separately #H397)
- » Use with Basic, GoldVault, JetStream, or PS6 and other equipment with 1.5 or 2 in diameter hose
- » Hose not included
- » Order #AA033 Capture Arm for units with 3 in diameter hose
- » Included: Jewelers table bracket (#AA812-J), connects to 2 in diameter hose, long oval nozzle (#H404), and fitting for 1.5 in hose
- » Optional: Flat table bracket, connects to 1.5 in diameter hose (#M410), SlideValve (#H397), installs anywhere on the arm

Magnetic Support For Flexible Arm, for polishing and grinding

LED containment box with magnifier
Item #: AA095

Shipping Weight: 5 lbs (2 kg)

- » Installs on any metallic surface
- » Can be used with any Quatro black flexible arm



ASV Capture Arm with Support Stand, diverts air from idle to active stations

With wide 8 in diameter plexi and narrow oval nozzles. Use nozzle best suited for your application
Item #: AA433PO-A33-20

Shipping Weight: 5 lbs (2 kg)

- » Arm extends to 24 in long, supports own weight. Reposition it when not in use
- » Allow more suction to the active workstations by diverting air from the idle ones
- » Start/stop your Quatro unit when you open/close the valve
- » Works together with as many ASVs as you desire
- » Connects to 3 in diameter hose
- » Other models available if using 1.5, 2 and 2.5 in diameter hoses
- » Automatically starts/stops the following units: PS6, PGR SuperFlow, CollectALL (CA), JetStream Brushless (JTB), SolderPure (SPB)
- » Included: 8 in diameter plexi nozzle, narrow oval nozzle, integrated table stand support bracket, 20 ft long connector cable
- » Optional: Cable to connect to unit (#AE750) [1 cable per unit, valve quantity may vary]



ASV Capture Arm with Support Stand, diverts air from idle to active stations

With wide 8 in diameter plexi nozzle
Item #: AA433P-A33-20

Shipping Weight: 5 lbs (2 kg)

- » Allow more suction to the active workstations by diverting air from the idle ones
- » Start/stop your Quatro unit when you open/close the valve
- » Arm extends to 24 in long, supports own weight
- » Connects to 3 in diameter hose
- » Purchase AA433P-A31-10 to connect to 1.5 in diameter hose (includes 10 ft cable, 20 ft cables available upon request)
- » Purchase AA433P-A35-10 to connect to 2.5 in diameter hose
- » Automatically starts/stops the following units: PS6, PGR SuperFlow, CollectALL (CA), JetStream Brushless (JTB), SolderPure (SPB)
- » Included: 8 in diameter plexi nozzle, table stand support bracket (#AA423), 10 ft long cable
- » Optional: Cable to connect to unit (#AE750) [1 cable per unit, valve quantity may vary]



ASV Capture Arm with Support Stand, diverts air from idle to active stations

With wide 4 in diameter round nozzle
Item #: AA433R-A33-20

Shipping Weight: 5 lbs (2 kg)

- » Allow more suction to the active workstations by diverting air from the idle ones
- » Start/stop your Quatro unit when you open/close the valve
- » Arm extends to 24 in long, supports own weight
- » Connects to 3 in diameter hose
- » Purchase AA433R-A31-25 to connect to 1.5 in diameter hose (includes 25 ft cable, 10 ft cables available upon request)
- » Purchase AA433R-A35-25 to connect to 2.5 in diameter hose
- » Automatically starts/stops the following units: PS6, PGR SuperFlow, CollectALL (CA), JetStream Brushless (JTB), SolderPure (SPB)
- » Included: 4 in diameter round nozzle, table stand support bracket (#AA423), 20 ft long cable
- » Optional: Cable to connect to unit (#AE750) [1 cable per unit, valve quantity may vary]



Cut-Off (1-2 Station)

2-Way Air Diverter
Item #: AA250

Dimensions (HxWxL): 3x6.5x7.5 in (8x17x19 cm)
Shipping Weight: 3 lb (1 kg)

- » Get full airflow at one station by diverting the air from the other
- » Also can switch to 2 stations running simultaneously
- » Powder coated heavy duty steel
- » Connect to your dust collector, 1.5" diameter hose





MSV (Manual Slide Valve) with integrated support stand
Airflow control at each workstation

Dimensions (HxWxL): 5x7.3x2.5 in (12.7x19x6 cm)
Shipping Weight: 5 lbs (2 kg)

- » Can be conveniently bolted OR clamped down to secure
- » Shut off airflow when not using
- » For manual open/close operation
- » Shut-off workstation when not in use, increase suction power to other workstations or attachments
- » Valve INCLUDES integrated support stand
- » CAN BE BUILT IN ANY DIAMETER (front and rear can be different diameters)

PART NUMBER SELECTION GUIDE		FRONT DIAMETER		
		1.5"	2"	3"
REAR DIAMETER	1.5"	AA433-M11	AA433-M21	AA433-M31
	2"	AA433-M12	AA433-M22	AA433-M32
	3"	AA433-M13	AA433-M23	AA433-M33



MSV (Manual Slide Valve)
Airflow control at each workstation

Dimensions (HxWxL): 3x7.3x2.5 in (8x19x6 cm)
Shipping Weight: 5 lbs (2 kg)

- » Shut Off Airflow When Not Using
- » For manual Open-Close operation
- » Shut-off work-station when not in use, increase suction power to other work-stations or attachments
- » CAN BE BUILT IN ANY DIAMETER (Front and Rear can be different diameters)
- » Optional: Support stand to mount onto existing valve is sold separately (#AA423)

PART NUMBER SELECTION GUIDE		FRONT DIAMETER		
		1.5"	2"	3"
REAR DIAMETER	1.5"	AA413-M11	AA413-M21	AA413-M31
	2"	AA413-M12	AA413-M22	AA413-M32
	3"	AA413-M13	AA413-M23	AA413-M33

ASV 3" diameter with Support Stand, diverts air from idle to active stations

Automatic start/stop dust collector
Item #: AA433-A33-20

Dimensions (HxWxL): 3.6x7.3x2.5 in (9x19x6 cm)
Shipping Weight: 2 lbs (1 kg)

- » Allow more suction to the active workstations by diverting air from the idle ones
- » Start/stop your Quatro unit when you open/close the valve
- » Close valve when not using workstation, open valve when using dust collector
- » Install as many ASVs as you desire
- » 3 in diameter tubing; front and rear (other diameters available)
- » Can be built in any diameter, front and rear
- » Automatically starts/stops the following units: PS6, PGR SuperFlow, CollectALL (CA), JetStream Brushless (JTB), SolderPure (SPB)
- » Included: Table stand support bracket (#AA423), 20 ft long cable
- » Optional: Cable to connect to unit (#AE750) (1 cable per unit, valve quantity may vary)



ASV 3" diameter, diverts air from idle to active stations

Automatic start/stop dust collector
Item #: AA413-A33-20

Dimensions (HxWxL): 3.6x7.3x2.5 in (9x19x6 cm)
Shipping Weight: 2 lbs (1 kg)

- » Allow more suction to the active workstations by diverting air from the idle ones
- » Start/stop your Quatro unit when you open/close the valve
- » Close valve when not using workstation, open valve when using dust collector
- » 3 in diameter tubing; front and rear (other diameters available)
- » Can be built in any diameter, front and rear
- » Automatically starts/stops the following units: PS6, PGR SuperFlow, CollectALL (CA), JetStream Brushless (JTB), SolderPure (SPB)
- » Included: 20 ft long cable
- » Optional: Table stand support bracket (#AA423), cable to connect to unit (#AE750) (1 cable per unit, valve quantity may vary)



Noise Reducing Silencer, installs on air discharge to reduce noise

Used on Velocity and DFH Units
Item #: H250

Dimensions (HxWxL): 12x13.5x3.25 in (30x34x8 cm)
Shipping Weight: 5 lb (2 kg)

- » Used on Velocity, DFH, MMP, PS2



Mini Noise Silencer

Install on air discharge to reduce noise
Item #: A081

Dimensions (HxWxL): 7x7x3 in (18x18x8 cm)
Shipping Weight: 3 lbs (1 kg)

- » Compatible with all Basic (BA), CollectAll(CA), MedEVAC (MMP) and iVAC models





SplashGuard with LED Magnifier
Air Attachment For Lathe
Item #: AA783

Dimensions (HxWxL): 12x8x14.5 in (31x20x37 cm)
Shipping Weight: 6 lb (3 kg)
Electrical: 100-120 V, 60 Hz, 0.3 A

- » Bright LED illuminated, with ON/OFF switch
- » LED frontal illumination does not cast shadow on objects worked on
- » LED magnifier also serves as debris shield
- » LED shield/magnifier (2X magnification) is fully adjustable
- » Connects to 1.5", 2", 2.5" or 3" diameter hose
- » Included: 120-240 V adapter (#AA193), SplashPan (#AR073)
- » Optional: Manual slide version #AA783-MSV, Auto-Start Valve version: #AA783-ASV
- » Optional Upgrade Kit #2-0008-0011 adds Manual Shut-off Valve (MSV) to this accessory
- » Optional Upgrade Kit #2-0008-0012 adds Auto-Start Valve (ASV) to this accessory

SplashGuard LED with Protective Face Shield
Air Attachment For Lathe
Item #: AA883

Dimensions (HxWxL): 12x8x14.5 in (31x20x37 cm)
Shipping Weight: 6 lb (3 kg)
Electrical: 100-120 V, 60 Hz, 0.3 A

- » Bright LED illuminated, with ON/OFF switch
- » Powder coated heavy duty steel
- » Connects to 1.5", 2", 2.5" or 3" diameter hose
- » Replacement Shield available (#AA103)
- » #AA883-MSV SplashGuard LED with Manual Slide Valve included
- » #AA883-ASV SplashGuard LED with Auto-Start Valve included
- » Included: 120-240 V power adapter (#AA193), LED light strip (#AA109), and SplashPan (#AR073)
- » Optional Upgrade Kit #2-0008-0011 adds Manual Shut-off Valve (MSV) to this accessory
- » Optional Upgrade Kit #2-0008-0012 adds Auto-Start Valve (ASV) to this accessory



Bench Suction Pin, for polishing & grinding
Jeweler's bench front attachment
Item #: AA213

Dimensions (WxL): 2.63x5.38 in (7x14 cm)
Shipping Weight: 5 lbs (2 kg)

- » Wood wedge installs in front of bench into GRC
- » Wire mesh prevents items from being drawn in
- » Connects to a dust collector with a 1.5 in (3.8 cm) hose
- » Optional: Steel under the counter support (#AA344)

Bench Suction Pin with Support, for polishing & grinding
Traditional workbench front attachment (including support)
Item #: AA343

Dimensions (WxL): 2.63x5.38 in (7x14 cm)
Shipping Weight: 6 lb (3 kg)

- » Wood wedge installs in front of bench
- » Wire mesh prevents items from being drawn in
- » Connects to a dust collector with a 1.5 in (3.8 cm) hose
- » Included: Steel under the counter support (#AA344)

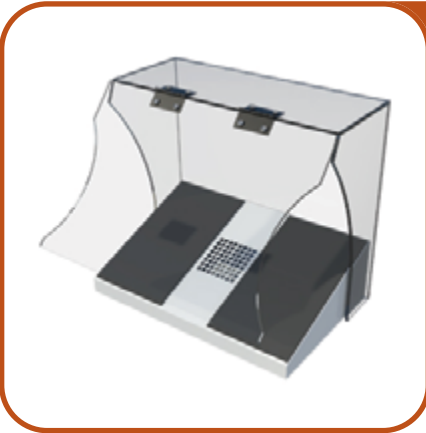
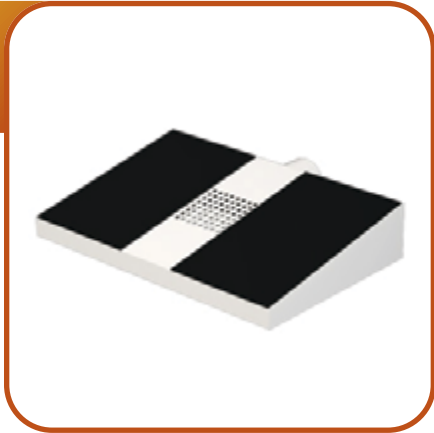


AirZone Lo-Profile

Low Profile Attachment Fits In Your Drawer
Item #: AA754

Dimensions (HxWxL): 2x10x6.5 in (5x25x17 cm)
Shipping Weight: 3 lb (1 kg)

- » Low profile, 2 in high, shield also available
- » AA075-1.5S with shield
- » Powder coated heavy duty steel
- » Connects to your dust collector: 1.5", 2", 2.5" or 3" dia. hose
- » Optional Shields:
3x4"(h) #AR198, 8.75x8.75"(h) #AR198, 6x8.75"(h) #AR196
- » Also available with integrated Automatic Start Valve (#AA754-ASV)
or integrated Manual Slide Valve (#AA754-MSV)
- » Optional Upgrade Kit #2-0008-0011
adds Manual Shut-off Valve (MSV) to this accessory
- » Optional Upgrade Kit #2-0008-0012
adds Auto-Start Valve (ASV) to this accessory



AirZone Dust Hood, Space-Saving Containment System

Capture your zirconia disk blowout and keep room clean and healthy!
Item #: AA731

Dimensions (HxWxL): 9x10x6.5 in (23x25x17 cm)
Shipping Weight: 6 lb (3 kg)

- » Compact containment enclosure
- » Downdraft airflow helps keep contaminants away from breathing zone
- » Clear-Wall design: high visibility transparent walls
- » Hinged face shield swings up and away for better visibility
- » Gasket cushions for ergonomic hand support
- » Connects to your dust collector: 1.5", 2", 2.5" or 3" diameter hose
- » Also available with integrated Automatic Start Valve (#AA731-ASV)
or integrated Manual Slide Valve (#AA731-MSV)
- » Optional Upgrade Kit #2-0008-0011
adds Manual Shut-off Valve (MSV) to this accessory
- » Optional Upgrade Kit #2-0008-0012
adds Auto-Start Valve (ASV) to this accessory

AirZone with LED Magnifier, Air Attachment For Hand-piece

Downdraft airflow helps keep contaminants away from breathing zone
Item #: AA760

Dimensions (HxWxL): 12x10x6.5 in (31x25x17 cm)
Shipping Weight: 6 lb (3 kg)
Electrical: 120-240 V, 60 Hz, 0.3 A

- » Bright LED illuminated, with ON/OFF switch
- » Adjustable magnifier mounts separately onto accessory
- » LED Magnifier also serves as debris shield
- » Gasket cushions for ergonomic hand support
- » Connect to your dust collector: 1.5", 2", 2.5" or 3" diameter hose
- » Included: LED Magnifier with 120-240 V adapter (#AA555-17)
- » Also available with integrated Automatic Start Valve (#AA760-ASV)
or integrated Manual Slide Valve (#AA760-MSV)
- » Optional Upgrade Kit #2-0008-0011
adds Manual Shut-off Valve (MSV) to this accessory
- » Optional Upgrade Kit #2-0008-0012
adds Auto-Start Valve (ASV) to this accessory

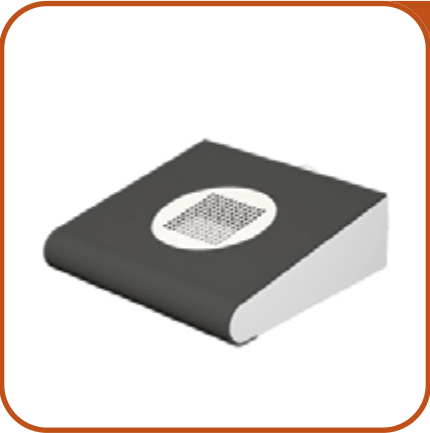


Front Suction Adapter

Workbench Attachment at the Front of the Bench
Item #: AA709

Dimensions (HxWxL): 9.5x6.5x7.5 in (24x17x19 cm)
Shipping Weight: 2 lb (1 kg)

- » Secure to underside of workbench, grille faces away from user
- » Shield keeps fine particles away from breathing zone
- » Connects to your dust collector: 1.5", 2", 2.5" or 3" diameter hose
- » Included: 3x4 in shield (#AR105)
- » Optional, larger shields: 8.75x8.75"(h) #AR198, 6x8.75"(h) #AR196
- » Also available with integrated Automatic Start Valve (#AA709-ASV) or integrated Manual Slide Valve (#AA709-MSV)
- » Optional Upgrade Kit #2-0008-0011 adds Manual Shut-off Valve (MSV) to this accessory
- » Optional Upgrade Kit #2-0008-0012 adds Auto-Start Valve (ASV) to this accessory



AirPort Lo-Profile

Downdraft airflow helps keep contaminants away from breathing zone
Item #: AA765

Dimensions (HxWxL): 3.5x10x9 in (90x25x23 cm)
Shipping Weight: 5 lb (2 kg)

- » Gasket cushions for ergonomic hand support
- » Powder coated heavy duty steel
- » To attach a Slide-Valve, call for part number, depends on connecting hose
- » Connects to your dust collector: 1.5", 2", 2.5" or 3" dia, hose
- » Also available with integrated Automatic Start Valve (#AA765-ASV) or integrated Manual Slide Valve (#AA765-MSV)
- » Optional Upgrade Kit #2-0008-0011 adds Manual Shut-off Valve (MSV) to this accessory
- » Optional Upgrade Kit #2-0008-0012 adds Auto-Start Valve (ASV) to this accessory

AirPort Dust Hood, Space-Saving Containment System

Capture your zirconia disk blowout and keep room clean and healthy!
Item #: AA732

Dimensions (HxWxL): 9x10x9 in (23x25x23 cm)
Shipping Weight: 6 lb (3 kg)

- » Compact containment enclosure
- » Clear-Wall design: high visibility transparent walls
- » Downdraft airflow helps keep contaminants away from breathing zone
- » Hinged face shield swings up and away for better visibility
- » Gasket cushions for ergonomic hand support
- » Connects to your dust collector: 1.5", 2", 2.5" or 3" diameter hose
- » Also available with integrated Automatic Start Valve (#AA732-ASV) or integrated Manual Slide Valve (#AA732-MSV)
- » Optional Upgrade Kit #2-0008-0011 adds Manual Shut-off Valve (MSV) to this accessory
- » Optional Upgrade Kit #2-0008-0012 adds Auto-Start Valve (ASV) to this accessory



AirPort with LED Magnifier, Workbench Air Attachment

Downdraft airflow helps keep contaminants away from breathing zone
Item #: AA722

Dimensions (HxWxL): 12x10x9 in (31x25x23 cm)
Shipping Weight: 10 lb (5 kg)
Electrical: 100-120 V, 60 Hz, 0.3 A

- » Bright LED illuminated, with ON/OFF switch
- » Adjustable magnifier mounts separately onto accessory
- » LED Magnifier also serves as debris shield
- » Gasket cushions for ergonomic hand support
- » Connect to your dust collector: 1.5", 2", 2.5" or 3" diameter hose
- » Included: LED Magnifier with 120-240 V adapter (#AA555-17)
- » Also available with integrated Automatic Start Valve (#AA722-ASV) or integrated Manual Slide Valve (#AA722-MSV)
- » Optional Upgrade Kit #2-0008-0011 adds Manual Shut-off Valve (MSV) to this accessory
- » Optional Upgrade Kit #2-0008-0012 adds Auto-Start Valve (ASV) to this accessory

Cyclone Collector, Cyclonic Separation Strips Out Larger Particles

Extend the life of your filter bags, reduce dust collector maintenance
Item #: AA249

Dimensions (HxWxL): 27x12x12 in (69x30x30 cm)
Shipping Weight: 8 lb (4 kg)

- » Use with any dust collection (except Velocity) for high debris applications
- » Cyclonic separation of particles
- » Connects between attachment and dust collector
- » Ideal for sandblasters and dry model trimmers
- » Holds up to 0.8 ft³, 6 US gallons (23 litres)
- » Connect to your dust collector
- » Includes 6 ft of 2 in diameter hose (#H154-06)
- » Includes kit to reduce hose to 1.5 in diameter

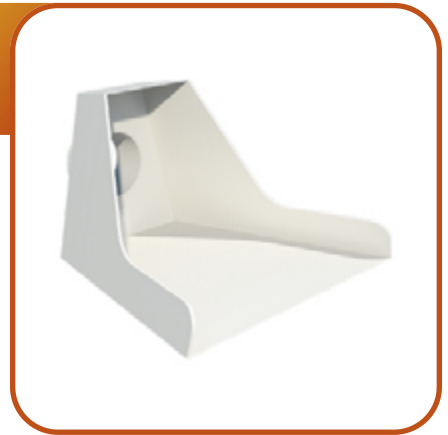


Fishmouth

Conventional Workbench Air Attachment
Item #: AA751

Dimensions (HxWxL): 5x8.5x9 in (13x22x23 cm)
Shipping Weight: 3 lb (1 kg)

- » Powder coated heavy duty steel
- » Wire mesh keeps parts from being drawn in
- » Connects to your dust collector: 1.5", 2", 2.5" or 3" diameter hose
- » Also available with integrated Automatic Start Valve (#AA751-ASV) or integrated Manual Slide Valve (#AA751-MSV)
- » Optional Upgrade Kit #2-0008-0011 adds Manual Shut-off Valve (MSV) to this accessory
- » Optional Upgrade Kit #2-0008-0012 adds Auto-Start Valve (ASV) to this accessory



Fishmouth Mini

Compact Workbench Air Attachment
Item #: AA535

Dimensions (HxWxL): 4x6x5.5 in (10x15x14 cm)
Shipping Weight: 2 lb (1 kg)

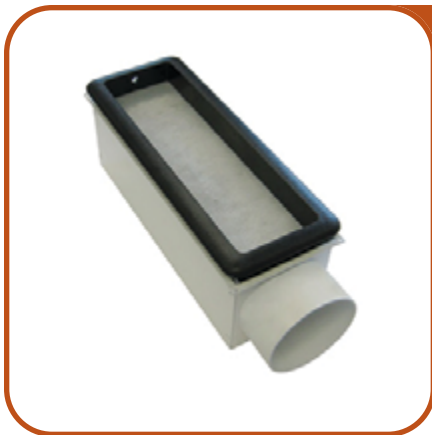
- » Powder coated heavy duty steel
- » Attaches to a 1.5 in (38 mm) hose diameter
- » Compact is ideal for dentist
- » Smaller form factor, perfect for portability

Bench Downdraft Adapter

(adapter only)
Item #: AA782

Dimensions (HxWxL): 3x4x6 in (76x10x15 cm)
Shipping Weight: 5 lb (2 kg)

- » Installs to underside of workbench
- » Ideal to install beneath drawer
- » Powder coated heavy duty steel
- » Connects to 1.5, 2, 2.5 or 3 inch diameter hose
- » Optional Upgrade Kit #2-0008-0011 adds Manual Shut-off Valve (MSV)
- » Optional Upgrade Kit #2-0008-0012 adds Auto-Start Valve (ASV)
- » #AA782-MSV - Bench Downdraft Adapter with Manual Slide Valve included
- » #AA782-ASV - Bench Downdraft Adapter with Auto-Start Valve included



Surface Connector Port, for polishing and grinding

Capture from top of workbench to collector below
Item #: AA188-03

Dimensions (HxWxL): 3x4x11 in (8x10x28 cm)
Shipping Weight: 7 lbs (3 kg)

- » Includes removable black plastic frame, filter pad and connection box below
- » Connection box installs to underside of workbench
- » Plastic frame installs either onto the box or into counter
- » Powder coated heavy-duty steel
- » Connects to a dust collector with 3 in diameter hose



On/Off Remote
1-Station Hand-switch
Item #: AA011 or AA375

Shipping Weight: 1 lb (0.5 kg)

- » Conveniently remote start unit from 6 feet away
- » AA011 for Velocity, JS0200, JS1200, Medevac Mini, DFH
- » AA375 for SmartVacs, IVACs, MMP, MP, PS Series

On/Off 2-Station Remote
2-Station Hand-switch
Item #: AA012 or AA432

Shipping Weight: 1 lb (0.5 kg)

- » Conveniently remote start unit from 6 feet away
- » 8 feet between stations
- » AA012 for Velocity, JS0200, JS1200, Medevac Mini, DFH
- » AA432 for SmartVacs, IVACs, MMP, MP, PS Series



Remote Foot-pedal
1-Station Foot-pedal
Item #: AA114 or AA175

Shipping Weight: 1 lb (0.5 kg)

- » Conveniently remote start unit from 6 feet away
- » AA114 for Velocity, JS0200, JS1200, Medevac Mini, DFH
- » AA175 for SmartVacs, IVACs, MMP, MP, PS Series

Remote Foot-pedal for 2-Stations
2-Station Foot-pedal
Item #: AA224 or AA442

Shipping Weight: 1 lb (0.5 kg)

- » Conveniently remote start unit from 6 feet away
- » Includes a wired "T" with (2) 6ft long foot-pedals
- » AA224 for Velocity, JS0200, JS1200, Medevac Mini, DFH
- » AA442 for SmartVacs, IVACs, MMP, MP, PS Series

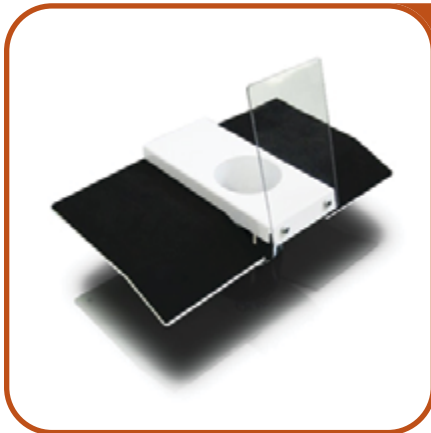


Universal On/Off Foot-Pedal

Remote start any device from 6 ft away (15 A max.)
Item #: H181

Shipping Weight: 1 lb (0.5 kg)

- » Pedal installs into 120 V wall outlet, device plugs into pedal
- » Conveniently remote start your device from 6 feet away
- » Start-stop of all equipment, directly from wall outlet
- » 15 amp (maintained & momentary)



AirTop Workbench Air Attachment Item #: A103

Dimensions (HxWxL): 7x11x6.5 in (18x28x17 cm)
Shipping Weight: 5 lb (2 kg)

- » Attaches to front top of workbench
- » Powder coated heavy duty steel
- » Gasket cushions for ergonomic hand support
- » Wire mesh screen keeps parts from being drawn in
- » To attach a ASV or MSV (Slide-Valve), contact us
- » Connects to your dust collector (1.5", 2", 2.5" diameter hose)
- » Dimensions (HxWxL): 7x11x6.5 in (18x28x17 cm)

360 Swivel

Top piece turns 360 for maximum convenience
Item #: A081

Dimensions (HxWxL): 4x8x7 in (10x20x18 cm)
Shipping Weight: 4 lb (2 kg)

- » Installed anywhere on your workbench
- » Drill out a hole and connect hose from beneath
- » Easily removable
- » Ships in 2 pieces
- » Wire mesh keeps parts from being drawn in
- » Connects to 2.5 in diameter hose



ABOUT US

HIGH EFFICIENCY, PORTABLE AND INTEGRATED
AIR MANAGEMENT SOLUTIONS



Since 1991 QUATRO Air Technologies has been researching, designing and manufacturing high efficiency, portable and integrated air management solutions for commercial and industrial applications.

Working closely with engineers and professionals from a wide range of industries and services helped us deliver solutions that match the specific requirements of almost any sector.

Our air purification systems are indispensable tools for industries and processes generating high volumes of debris, ultra-fine particles, chemicals, VOC's and fumes: welding, soldering, laser marking, cutting and engraving, dental laboratories, jewelry and precious metals processing, digital, offset and large format printing.

