

# QUATRO

Part of Absolent Air Care Group



DUST COLLECTORS AND FUME EXTRACTORS

## ACCESSORIES

FOR DENTAL APPLICATIONS



### LED Magnifier / Debris Shield with Magnetic Base

Illuminates work area and improves visibility

Item #: AA555

Dimensions: 7 in (18 cm) diameter, 14 in (35 cm) arm

Shipping Weight: 2 lb (1 kg)

Electrical: 120-240 V, 0.3 A

- » 3 Functions: illumination, 2X magnification and debris shield
- » LEDs around perimeter of magnifier provide ideal lighting for work area
- » Integrated On/Off switch
- » Flexible arm extends 14" from base
- » Attaches to any ferromagnetic surface (iron/steel)
- » Included: 120-240 V adapter (#AA193), steel plate with 4 wood screws (#H125) if metal surface not available
- » Optional: 12 in (30 cm) arm extension (#AA429)

### Magnifier / Debris Shield with Magnetic Base

Better visibility and protection from debris

Item #: AA427-12

Dimensions: 7 in (18 cm) diameter, 14 in (35 cm) arm

Shipping Weight: 2 lb (1 kg)

- » Dual purpose: 2X magnification and debris shield
- » Flexible arm extends 14" from base
- » Attaches to any ferromagnetic surface (iron/steel)
- » Included: steel plate with 4 wood screws (#H125) in case metal surface not available
- » Optional: 12 in (30 cm) arm extension (#AA429)



1.877.978.2876 · [quatroair.com](http://quatroair.com)

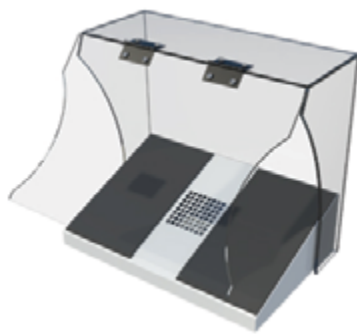
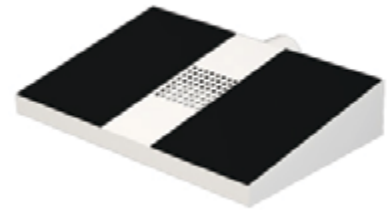
1

## AirZone Lo-Profile

Low Profile Attachment Fits In Your Drawer  
Item #: AA754

Dimensions (HxWxL): 2x10x6.5 in (5x25x17 cm)  
Shipping Weight: 3 lb (1 kg)

- » Low profile, 2 in high, shield also available
- » AA075-1.5S with shield
- » Powder coated heavy duty steel
- » Connects to your dust collector: 1.5", 2", 2.5" or 3" dia. hose
- » Optional Shields:  
3x4"(h) #AR198, 8.75x8.75"(h) #AR198, 6x8.75"(h) #AR196
- » Also available with integrated Automatic Start Valve (#AA754-ASV)  
or integrated Manual Slide Valve (#AA754-MSV)
- » Optional Upgrade Kit #2-0008-0011  
adds Manual Shut-off Valve (MSV) to this accessory
- » Optional Upgrade Kit #2-0008-0012  
adds Auto-Start Valve (ASV) to this accessory



## AirZone Dust Hood, Space-Saving Containment System

Capture your zirconia disk blowout and keep room clean and healthy!  
Item #: AA731

Dimensions (HxWxL): 9x10x6.5 in (23x25x17 cm)  
Shipping Weight: 6 lb (3 kg)

- » Compact containment enclosure
- » Downdraft airflow helps keep contaminants away from breathing zone
- » Clear-Wall design: high visibility transparent walls
- » Hinged face shield swings up and away for better visibility
- » Gasket cushions for ergonomic hand support
- » Connects to your dust collector: 1.5", 2", 2.5" or 3" diameter hose
- » Also available with integrated Automatic Start Valve (#AA731-ASV)  
or integrated Manual Slide Valve (#AA731-MSV)
- » Optional Upgrade Kit #2-0008-0011  
adds Manual Shut-off Valve (MSV) to this accessory
- » Optional Upgrade Kit #2-0008-0012  
adds Auto-Start Valve (ASV) to this accessory

## AirZone with LED Magnifier, Air Attachment For Hand-piece

Downdraft airflow helps keep contaminants away from breathing zone  
Item #: AA760

Dimensions (HxWxL): 12x10x6.5 in (31x25x17 cm)  
Shipping Weight: 6 lb (3 kg)  
Electrical: 120-240 V, 60 Hz, 0.3 A

- » Bright LED illuminated, with ON/OFF switch
- » Adjustable magnifier mounts separately onto accessory
- » LED Magnifier also serves as debris shield
- » Gasket cushions for ergonomic hand support
- » Connect to your dust collector: 1.5", 2", 2.5" or 3" diameter hose
- » Included: LED Magnifier with 120-240 V adapter (#AA555-17)
- » Also available with integrated Automatic Start Valve (#AA760-ASV)  
or integrated Manual Slide Valve (#AA760-MSV)
- » Optional Upgrade Kit #2-0008-0011  
adds Manual Shut-off Valve (MSV) to this accessory
- » Optional Upgrade Kit #2-0008-0012  
adds Auto-Start Valve (ASV) to this accessory

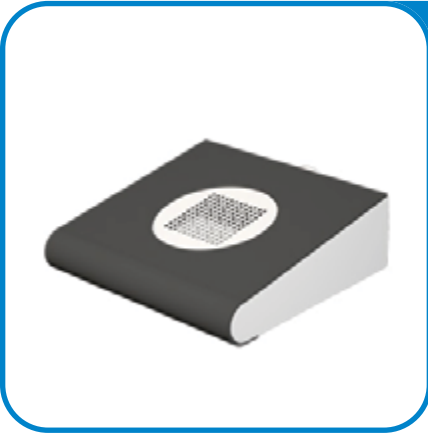


## Front Suction Adapter

Workbench Attachment at the Front of the Bench  
Item #: AA709

Dimensions (HxWxL): 9.5x6.5x7.5 in (24x17x19 cm)  
Shipping Weight: 2 lb (1 kg)

- » Secure to underside of workbench, grille faces away from user
- » Shield keeps fine particles away from breathing zone
- » Connects to your dust collector: 1.5", 2", 2.5" or 3" diameter hose
- » Included: 3x4 in shield (#AR105)
- » Optional, larger shields: 8.75x8.75"(h) #AR198, 6x8.75"(h) #AR196
- » Also available with integrated Automatic Start Valve (#AA709-ASV) or integrated Manual Slide Valve (#AA709-MSV)
- » Optional Upgrade Kit #2-0008-0011 adds Manual Shut-off Valve (MSV) to this accessory
- » Optional Upgrade Kit #2-0008-0012 adds Auto-Start Valve (ASV) to this accessory



### AirPort Lo-Profile

Downdraft airflow helps keep contaminants away from breathing zone  
Item #: AA765

Dimensions (HxWxL): 3.5x10x9 in (90x25x23 cm)  
Shipping Weight: 5 lb (2 kg)

- » Gasket cushions for ergonomic hand support
- » Powder coated heavy duty steel
- » To attach a Slide-Valve, call for part number, depends on connecting hose
- » Connects to your dust collector: 1.5", 2", 2.5" or 3" dia, hose
- » Also available with integrated Automatic Start Valve (#AA765-ASV) or integrated Manual Slide Valve (#AA765-MSV)
- » Optional Upgrade Kit #2-0008-0011 adds Manual Shut-off Valve (MSV) to this accessory
- » Optional Upgrade Kit #2-0008-0012 adds Auto-Start Valve (ASV) to this accessory

### AirPort Dust Hood, Space-Saving Containment System

Capture your zirconia disk blowout and keep room clean and healthy!  
Item #: AA732

Dimensions (HxWxL): 9x10x9 in (23x25x23 cm)  
Shipping Weight: 6 lb (3 kg)

- » Compact containment enclosure
- » Clear-Wall design: high visibility transparent walls
- » Downdraft airflow helps keep contaminants away from breathing zone
- » Hinged face shield swings up and away for better visibility
- » Gasket cushions for ergonomic hand support
- » Connects to your dust collector: 1.5", 2", 2.5" or 3" diameter hose
- » Also available with integrated Automatic Start Valve (#AA732-ASV) or integrated Manual Slide Valve (#AA732-MSV)
- » Optional Upgrade Kit #2-0008-0011 adds Manual Shut-off Valve (MSV) to this accessory
- » Optional Upgrade Kit #2-0008-0012 adds Auto-Start Valve (ASV) to this accessory



### AirPort with LED Magnifier, Workbench Air Attachment

Downdraft airflow helps keep contaminants away from breathing zone  
Item #: AA722

Dimensions (HxWxL): 12x10x9 in (31x25x23 cm)  
Shipping Weight: 10 lb (5 kg)  
Electrical: 100-120 V, 60 Hz, 0.3 A

- » Bright LED illuminated, with ON/OFF switch
- » Adjustable magnifier mounts separately onto accessory
- » LED Magnifier also serves as debris shield
- » Gasket cushions for ergonomic hand support
- » Connect to your dust collector: 1.5", 2", 2.5" or 3" diameter hose
- » Included: LED Magnifier with 120-240 V adapter (#AA555-17)
- » Also available with integrated Automatic Start Valve (#AA722-ASV) or integrated Manual Slide Valve (#AA722-MSV)
- » Optional Upgrade Kit #2-0008-0011 adds Manual Shut-off Valve (MSV) to this accessory
- » Optional Upgrade Kit #2-0008-0012 adds Auto-Start Valve (ASV) to this accessory

### Suction Wedge, Workbench Attachment at the Front of the Bench

Downdraft airflow helps keep contaminants away from breathing zone  
Item #: AA343

Dimensions (WxL): 2.63x5.38 in (7x14 cm)  
Shipping Weight: 6 lb (3 kg)

- » Wood wedge installs in front of bench
- » Wire mesh prevents items from being drawn in
- » Connects to 1.5 in diameter hose below
- » Under-the-counter support makes it easy to remove when not needed
- » Included: Steel under-the-counter support (#AA344)
- » Also available: Suction Wedge only, without steel under-the-counter support (#AA213)



## SplashGuard with LED Magnifier

Air Attachment For Lathe  
Item #: AA783

Dimensions (HxWxL): 12x8x14.5 in (31x20x37 cm)  
Shipping Weight: 6 lb (3 kg)  
Electrical: 100-120 V, 60 Hz, 0.3 A

- » Bright LED illuminated, with ON/OFF switch
- » LED frontal illumination does not cast shadow on objects worked on
- » LED magnifier also serves as debris shield
- » LED shield/magnifier (2X magnification) is fully adjustable
- » Connects to 1.5", 2", 2.5" or 3" diameter hose
- » Included: 120-240 V adapter (#AA193), SplashPan (#AR073)
- » Optional: Manual slide version #AA783-MSV, Auto-Start Valve version: #AA783-ASV
- » Optional Upgrade Kit #2-0008-0011 adds Manual Shut-off Valve (MSV) to this accessory
- » Optional Upgrade Kit #2-0008-0012 adds Auto-Start Valve (ASV) to this accessory



## SplashGuard LED with Protective Face Shield

Air Attachment For Lathe  
Item #: AA883

Dimensions (HxWxL): 12x8x14.5 in (31x20x37 cm)  
Shipping Weight: 6 lb (3 kg)  
Electrical: 100-120 V, 60 Hz, 0.3 A

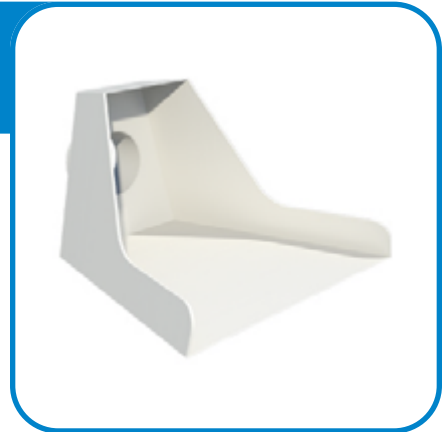
- » Bright LED illuminated, with ON/OFF switch
- » Powder coated heavy duty steel
- » Connects to 1.5", 2", 2.5" or 3" diameter hose
- » Replacement Shield available (#AA103)
- » #AA883-MSV SplashGuard LED with Manual Slide Valve included
- » #AA883-ASV SplashGuard LED with Auto-Start Valve included
- » Included: 120-240 V power adapter (#AA193), LED light strip (#AA109), and SplashPan (#AR073)
- » Optional Upgrade Kit #2-0008-0011 adds Manual Shut-off Valve (MSV) to this accessory
- » Optional Upgrade Kit #2-0008-0012 adds Auto-Start Valve (ASV) to this accessory

## Fishmouth

Conventional Workbench Air Attachment  
Item #: AA751

Dimensions (HxWxL): 5x8.5x9 in (13x22x23 cm)  
Shipping Weight: 3 lb (1 kg)

- » Powder coated heavy duty steel
- » Wire mesh keeps parts from being drawn in
- » Connects to your dust collector: 1.5", 2", 2.5" or 3" diameter hose
- » Also available with integrated Automatic Start Valve (#AA751-ASV) or integrated Manual Slide Valve (#AA751-MSV)
- » Optional Upgrade Kit #2-0008-0011 adds Manual Shut-off Valve (MSV) to this accessory
- » Optional Upgrade Kit #2-0008-0012 adds Auto-Start Valve (ASV) to this accessory



## Fishmouth Mini

Compact Workbench Air Attachment  
Item #: AA535

Dimensions (HxWxL): 4x6x5.5 in (10x15x14 cm)  
Shipping Weight: 2 lb (1 kg)

- » Powder coated heavy duty steel
- » Attaches to a 1.5 in (38 mm) hose diameter
- » Compact is ideal for dentist
- » Smaller form factor, perfect for portability



### LED ClearView, Illuminated Workbench Containment Box

Connects to dust collector / purifier via 3 in diameter hose  
Item #: AA004-3L

Dimensions (HxWxL): 15x15.5x14.25 in (38x39x36 cm)  
Shipping Weight: 17 lb (8 kg)  
Electrical: 100-120 V, 60 Hz, 0.3 A

- » Powder coated heavy duty steel
- » Eliminates debris from breathing zone, contains all debris within enclosure
- » Side opening suited for working with a lathe
- » Ideal applications: monomer odor, lathes, or any other application where debris containment is essential
- » PN AA004-3L, includes 3 in inlet (1.5 in , 2 in , 2.5 in 4 in inlets also available)
- » To add Slide-Valve to 3 in diameter inlet, purchase PN: AA197
- » Included: LED light (#AA190), 120 V PowerAdapter (#AA193), 3 in diameter inlet in rear (#H162)
- » Optional: 3 in diameter slide-valve installs inside (#AR197), ASV (#AA424 for 3 in hose connection)

### LED ClearView, Illuminated Workbench Containment Box

Connects to dust collector / purifier via 1.5 in diameter hose  
Item #: AA257-1.5LB

Dimensions (HxWxL): 15x15.5x14.25 in (38x39x36 cm)  
Shipping Weight: 17 lb (8 kg)  
Electrical: 100-120 V, 60 Hz, 0.3 A

- » Powder coated heavy duty steel
- » Eliminates debris from breathing zone, contains all debris within enclosure
- » Side opening suited for working with a lathe
- » Ideal applications: where harmful debris containment is essential
- » Included: 1.5 in diameter inlet in rear (#M118)
- » Optional: 3" diameter slide-valve (#H397), 3" diameter inlet (#H162)
- » Also available: 2" , 2.5" , 4" diameter inlets



### Milling AirBox, Compressed air, LED Magnifier, Dust Collector Ready

Connects to dust collector via 1.5 in diameter hose  
Item #: 2-0058-0010 (1.5 in diameter inlet, no valve)  
Item #: 2-0058-0011 (1.5 in diameter inlet, ASV included)

Dimensions (HxWxL): 15x15.5x14.25 in (38x39x36 cm) · Shipping Weight: 17 lb (8 kg)  
Electrical: 100-120 V, 50/60 Hz, 0.3 A

- » LED illuminated workbench containment cabinet, eliminates debris from breathing zone
- » Easy connection to dust collector and compressed air line
- » Compressed air line can be attached to either side of the cabinet
- » Hinged magnifier (7 in diameter, 2X magnification factor)
- » Adjustable source capture nozzle for efficient removal of fine particulate
- » Variable flow compressed air accessories\* included: air gun, valve and tubing
- » "Push-to-connect" fitting for 1/4" diameter compressed air line
- » \*ASV option: when used with appropriate QUATRO units, remotely starts-stops dust collector while you open/close the valve

### LED AirBox, Illuminated Desktop Containment System

Keep a clean and healthy work environment by containing dust, odor and debris

Item #: AA266-1S+, Space-saving LED AirBox  
Item #: AA266-2S+, Full-size LED AirBox

Dimensions (HxWxL): 14.5x24x17.5 in (37x61x45cm) (Space-saving Box)  
Dimensions (HxWxL): 24x29x20 in (61x74x51cm) (Full-size Box)

- » Bright LED illuminated, with ON/OFF switch
- » LED can be installed on top or either side of box
- » Hinged doors swing up and away for easy access
- » Powder coated heavy duty steel
- » Connect to your dust collector via 1.5", 2", 2.5" or 3" diameter hose.  
Please specify required diameter when placing the order.
- » Included: LED power adapter. Please specify country/voltage when placing the order.
- » Also available with integrated Automatic Start Valve or integrated Manual Slide Valve



### Deluxe Mobile Arm, Move it out of the way when not in use

Connects to 2.5 in diameter hose  
Item #: AA009

Shipping Weight: 5 lb (2 kg)

- » Installs on your workbench
- » Extends to 24 in long, holds its own weight
- » Included: Table-bracket (#M042) connects to 2.5 in hose, Plexi wide nozzle (#AA043)
- » Optional: SlideValve (#H397)



### Deluxe Mobile Arm, Move it out of the way when not in use

Connects to 1.5 in diameter hose  
Item #: AA326

Shipping Weight: 5 lb (2 kg)

- » Mounts on your workbench
- » Extends to 24 in long, holds its own weight
- » Included: Table-bracket (#M410) connects to 1.5 in hose, Plexi wide nozzle (#AA043)
- » Optional: SlideValve (#H397)



### ASV Capture Arms

Airflow control AND remotely start/stop dust collector at each workstation  
Connect several ASVs to one dust collector to accommodate multiple workstations

Shipping Weight: 2 lb (1 kg)

- » Slide Valve opens and closes for a dual purpose:
  - Controls suction by blocking airflow at idle workstations
  - Remotely switches dust collector on and off at each workstation
- » Connect as many ASVs as needed to one dust collector
- » Dust collector will remain on as long as one valve is open
- » REAR COLLAR DIAMETERS CAN VARY (1.5 in, 2 in, 2.5 in or 3 in)
- » Included: Inlet Nozzle (see table below), Table-Stand Support Bracket (#AA423), 25 ft long cable
- » Optional: Cable to connect to unit (#AE750) (1 cable per unit)



PART NUMBER SELECTION GUIDE		FRONT DIAMETER 3"		
		8" Plexi Nozzle	4" Round Nozzle	1.5" Oval Nozzle
REAR DIAMETER	1.5"	AA433P-A31-20	AA433R-A31-20	AA4330-A31-20
	2"	AA433P-A32-20	AA433R-A32-20	AA4330-A32-20
	2.5"	AA433P-A35-20	AA433R-A35-20	AA4330-A35-20
	3"	AA433P-A33-20	AA433R-A33-20	AA4330-A33-20



**ASV (Auto Start Valve)**

**Airflow control AND remotely start/stop dust collector at each workstation**  
**Connect several ASVs to one dust collector to accommodate multiple workstations**

Dimensions (HxWxL): 6.2x7.3x2.5 in (16x19x6 cm)  
 Shipping Weight: 2 lb (1 kg)

- » Slide Valve opens and closes for a dual purpose:  
 Controls suction by blocking airflow at idle workstations  
 Remotely switches dust collector on and off at each workstation
- » Connect as many ASVs as needed to one dust collector. Dust collector will remain on as long as one valve is open
- » Clamp or bolt ASVs directly to workbench
- » FRONT AND REAR COLLAR DIAMETERS CAN VARY (1.5 in, 2 in, 2.5 in or 3 in)
- » Included: 25 ft cable (10 ft cable also available)
- » Optional: Table-Stand Support Bracket (#AA423), Cable to connect to unit (#AE750) (1 cable per unit)

PART NUMBER SELECTION GUIDE		FRONT DIAMETER			
		1.5"	2"	2.5"	3"
REAR DIAMETER	1.5"	AA413-A11-20	AA413-A21-20	AA413-A51-20	AA413-A31-20
	2"	AA413-A12-20	AA413-A22-20	AA413-A52-20	AA413-A32-20
	2.5"	AA413-A15-20	AA413-A25-20	AA413-A55-20	AA413-A35-20
	3"	AA413-A13-20	AA413-A23-20	AA413-A53-20	AA413-A33-20

**ASV (Auto Start Valve) with integrated support stand**

**Airflow control AND remotely start/stop dust collector at each workstation**  
**Connect several ASVs to one dust collector to accommodate multiple workstations**

Dimensions (HxWxL): 6.2x7.3x2.5 in (16x19x6 cm)  
 Shipping Weight: 2 lb (1 kg)

- » Slide Valve opens and closes for a dual purpose:  
 Controls suction by blocking airflow at idle workstations  
 Remotely switches dust collector on and off at each workstation
- » Connect as many ASVs as needed to one dust collector. Dust collector will remain on as long as one valve is open
- » Clamp or bolt the integrated support stand directly to workbench
- » FRONT AND REAR COLLAR DIAMETERS CAN VARY (1.5 in, 2 in, 2.5 in or 3 in)
- » Included: 25 ft cable (10 ft cable also available)
- » Optional: Cable to connect to unit (#AE750) (1 cable per unit)



PART NUMBER SELECTION GUIDE		FRONT DIAMETER			
		1.5"	2"	2.5"	3"
REAR DIAMETER	1.5"	AA433-A11-20	AA433-A21-20	AA433-A51-20	AA433-A31-20
	2"	AA433-A12-20	AA433-A22-20	AA433-A52-20	AA433-A32-20
	2.5"	AA433-A15-20	AA433-A25-20	AA433-A55-20	AA433-A35-20
	3"	AA433-A13-20	AA433-A23-20	AA433-A53-20	AA433-A33-20

## MSV (Manual Slide Valve)

Airflow control at each workstation

Dimensions (HxWxL): 3x7.3x2.5 in [8x19x6 cm]  
Shipping Weight: 5 lbs [2 kg]

- » Shut Off Airflow When Not Using
- » For manual Open-Close operation
- » Shut-off work-station when not in use, increase suction power to other work-stations or attachments
- » CAN BE BUILT IN ANY DIAMETER (Front and Rear can be different diameters)
- » Optional: Support stand to mount onto existing valve is sold separately (#AA423)



PART NUMBER SELECTION GUIDE		FRONT DIAMETER		
		1.5"	2"	3"
REAR DIAMETER	1.5"	AA413-M11	AA413-M21	AA413-M31
	2"	AA413-M12	AA413-M22	AA413-M32
	3"	AA413-M13	AA413-M23	AA413-M33



## MSV (Manual Slide Valve) with integrated support stand

Airflow control at each workstation

Dimensions (HxWxL): 5x7.3x2.5 in [12.7x19x6 cm]  
Shipping Weight: 5 lbs [2 kg]

- » Can be conveniently bolted OR clamped down to secure
- » Shut off airflow when not using
- » For manual open/close operation
- » Shut-off workstation when not in use, increase suction power to other workstations or attachments
- » Valve INCLUDES integrated support stand
- » CAN BE BUILT IN ANY DIAMETER (front and rear can be different diameters)

PART NUMBER SELECTION GUIDE		FRONT DIAMETER		
		1.5"	2"	3"
REAR DIAMETER	1.5"	AA433-M11	AA433-M21	AA433-M31
	2"	AA433-M12	AA433-M22	AA433-M32
	3"	AA433-M13	AA433-M23	AA433-M33





### Cyclone Collector, Cyclonic Separation Strips Out Larger Particles

Extend the life of your filter bags, reduce dust collector maintenance  
Item #: AA249

Dimensions (HxWxL): 27x12x12 in (69x30x30 cm)  
Shipping Weight: 8 lb (4 kg)

- » Use with any dust collection (except Velocity) for high debris applications
- » Cyclonic separation of particles
- » Connects between attachment and dust collector
- » Ideal for sandblasters and dry model trimmers
- » Holds up to 0.8 ft<sup>3</sup>, 6 US gallons (23 litres)
- » Connect to your dust collector
- » Includes 6 ft of 2 in diameter hose (#H154-06)
- » Includes kit to reduce hose to 1.5 in diameter

### Cut-Off (1-2 Station)

2-Way Air Diverter  
Item #: AA250

Dimensions (HxWxL): 3x6.5x7.5 in (8x17x19 cm)  
Shipping Weight: 3 lb (1 kg)

- » Get full airflow at one station by diverting the air from the other
- » Also can switch to 2 stations running simultaneously
- » Powder coated heavy duty steel
- » Connect to your dust collector, 1.5" diameter hose



### Bench Downdraft Adapter

Adapter only  
Item #: AA782

Dimensions (HxWxL): 3x4x6 in (76x10x15 cm)  
Shipping Weight: 5 lb (2 kg)

- » Installs to underside of workbench
- » Ideal to install beneath drawer
- » Powder coated heavy duty steel
- » Connects to 1.5, 2, 2.5 or 3 inch diameter hose
- » Optional Upgrade Kit #2-0008-0011 adds Manual Shut-off Valve (MSV)
- » Optional Upgrade Kit #2-0008-0012 adds Auto-Start Valve (ASV)
- » #AA782-MSV - Bench Downdraft Adapter with Manual Slide Valve included
- » #AA782-ASV - Bench Downdraft Adapter with Auto-Start Valve include



### mc<sup>4</sup> - Micromotor Controller (up to 4 devices)

Auto-Start dust collector with hand-piece or lathe  
Item #: AA444

Dimensions (HxWxL): 2.5x6.9x9.9 in (6x18x25 cm)  
Shipping Weight: 5 lb (2.3 kg)  
Electrical: 100-120 V, 60 Hz /12 A

- » Start/Stop your dust collector directly from your handpiece or lathe
- » Automatically Start/Stop your dust collector with up to 4 different devices
- » Dust collector switches ON automatically when your device is switched ON
- » Dust collector switches OFF automatically 5 seconds after your device switched OFF
- » Start/Stop any Quatro iSeries dust collector with mc<sup>4</sup> micromotor controller
- » Can also accept the following signals to start/stop a dust collector:  
Quatro hand-switch or foot-pedal  
0-30V AC/DC signal



### 360 Swivel

Top piece turns 360 for maximum convenience  
Item #: A081

Dimensions (HxWxL): 4x8x7 in (10x20x18 cm)  
Shipping Weight: 4 lb (2 kg)

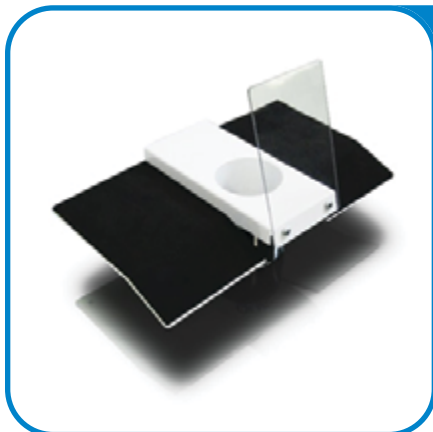
- » Installed anywhere on your workbench
- » Drill out a hole and connect hose from beneath
- » Easily removable
- » Ships in 2 pieces
- » Wire mesh keeps parts from being drawn in
- » Connects to 2.5 in diameter hose



### AirTop Workbench Air Attachment Item #: A103

Dimensions (HxWxL): 7x11x6.5 in (18x28x17 cm)  
Shipping Weight: 5 lb (2 kg)

- » Attaches to front top of workbench
- » Powder coated heavy duty steel
- » Gasket cushions for ergonomic hand support
- » Wire mesh screen keeps parts from being drawn in
- » To attach a ASV or MSV (Slide-Valve), contact us
- » Connects to your dust collector (1.5", 2", 2.5" diameter hose)
- » Dimensions (HxWxL): 7x11x6.5 in (18x28x17 cm)



### FumeTrap

Source capture accessory helps keep contaminants away from breathing zone  
Item #: H277

Dimensions (HxWxL): 8x12x6 in (20x31x15 cm)  
Shipping Weight: 3 lb (1 kg)

- » Connects to MonoPure desktop odor eliminator
- » Contains odors within enclosure
- » Plexiglass, 4 in diameter connection in back



### Universal On/Off Foot-Pedal Remote start any device from 6 ft away (15 A max.) Item #: H181

Shipping Weight: 1 lb (0.5 kg)

- » Pedal installs into 120 V wall outlet, device plugs into pedal
- » Conveniently remote start your device from 6 feet away
- » Start-stop of all equipment, directly from wall outlet
- » 15 amp (maintained & momentary)





**On/Off Remote**  
1-Station Hand-switch  
Item #: AA011 or AA375

Shipping Weight: 1 lb (0.5 kg)

- » Conveniently remote start unit from 6 feet away
- » AA011 for Velocity, JS0200, JS1200, Medevac Mini, DFH
- » AA375 for SmartVacs, IVACs, MMP, MP, PS Serie

**On/Off 2-Station Remote**  
2-Station Hand-switch  
Item #: AA012 or AA432

Shipping Weight: 1 lb (0.5 kg)

- » Conveniently remote start unit from 6 feet away
- » 8 feet between stations
- » AA012 for Velocity, JS0200, JS1200, Medevac Mini, DFH
- » AA432 for SmartVacs, IVACs, MMP, MP, PS Series



**Remote Foot-pedal**  
1-Station Foot-pedal  
Item #: AA114 or AA175

Shipping Weight: 1 lb (0.5 kg)

- » Conveniently remote start unit from 6 feet away
- » AA114 for Velocity, JS0200, JS1200, Medevac Mini, DFH
- » AA175 for SmartVacs, IVACs, MMP, MP, PS Series

**Remote Foot-pedal for 2-Stations**  
2-Station Foot-pedal  
Item #: AA224 or AA442

Shipping Weight: 1 lb (0.5 kg)

- » Conveniently remote start unit from 6 feet away
- » Includes a wired "T" with (2) 6ft long foot-pedals
- » AA224 for Velocity, JS0200, JS1200, Medevac Mini, DFH
- » AA442 for SmartVacs, IVACs, MMP, MP, PS Series



**Noise Reducing Silencer, installs on air discharge to reduce noise**  
Used on Velocity and DFH Units  
Item #: H250

Dimensions (HxWxL): 12x13.5x3.25 in (30x34x8 cm)  
Shipping Weight: 5 lb (2 kg)

» Used on Velocity, DFH, MMP, PS2



**Mini Noise Silencer**  
Install on air discharge to reduce noise  
Item #: A081

Dimensions (HxWxL): 7x7x3 in (18x18x8 cm)  
Shipping Weight: 3 lbs (1 kg)

» Compatible with all Basic (BA), CollectAll(CA), MedEVAC (MMP) and iVAC models