



CONTAINMENT ENCLOSURES
FOR DUST COLLECTORS AND FUME EXTRACTORS



AirZone Dust Hood, Space-Saving Containment System

Capture your zirconia disk blowout and keep room clean and healthy!
Item #: AA731

Dimensions (HxWxL): 9x10x6.5 in (23x25x17 cm)
Shipping Weight: 6 lb (3 kg)

- » Compact containment enclosure
- » Downdraft airflow helps keep contaminants away from breathing zone
- » Clear-Wall design: high visibility transparent walls
- » Hinged face shield swings up and away for better visibility
- » Gasket cushions for ergonomic hand support
- » Connects to your dust collector: 1.5", 2", 2.5" or 3" diameter hose
- » Also available with integrated Automatic Start Valve (#AA731-ASV) or integrated Manual Slide Valve (#AA731-MSV)
- » Optional Upgrade Kit #2-0008-0011 adds Manual Shut-off Valve (MSV) to this accessory
- » Optional Upgrade Kit #2-0008-0012 adds Auto-Start Valve (ASV) to this accessory

AirPort Dust Hood, Space-Saving Containment System

Capture your zirconia disk blowout and keep room clean and healthy!
Item #: AA732

Dimensions (HxWxL): 9x10x9 in (23x25x23 cm)
Shipping Weight: 6 lb (3 kg)

- » Compact containment enclosure
- » Clear-Wall design: high visibility transparent walls
- » Downdraft airflow helps keep contaminants away from breathing zone
- » Hinged face shield swings up and away for better visibility
- » Gasket cushions for ergonomic hand support
- » Connects to your dust collector: 1.5", 2", 2.5" or 3" diameter hose
- » Also available with integrated Automatic Start Valve (#AA732-ASV) or integrated Manual Slide Valve (#AA732-MSV)
- » Optional Upgrade Kit #2-0008-0011 adds Manual Shut-off Valve (MSV) to this accessory
- » Optional Upgrade Kit #2-0008-0012 adds Auto-Start Valve (ASV) to this accessory

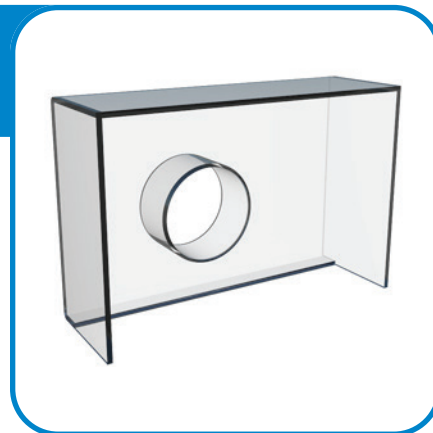


FumeTrap

Source capture accessory helps keep contaminants away from breathing zone
Item #: H277

Dimensions (HxWxL): 8x12x6 in (20x31x15 cm)
Shipping Weight: 3 lb (1 kg)

- » Connects to MonoPure desktop odor eliminator
- » Contains odors within enclosure
- » Plexiglass, 4 in diameter connection in back



LED ClearView, Illuminated Workbench Containment Box

Connects to dust collector / purifier via 1.5 in diameter hose
Item #: AA257-1.5LB

Dimensions (HxWxL): 15x15.5x14.25 in (38x39x36 cm)
Shipping Weight: 17 lb (8 kg)
Electrical: 100-120 V, 60 Hz, 0.3 A

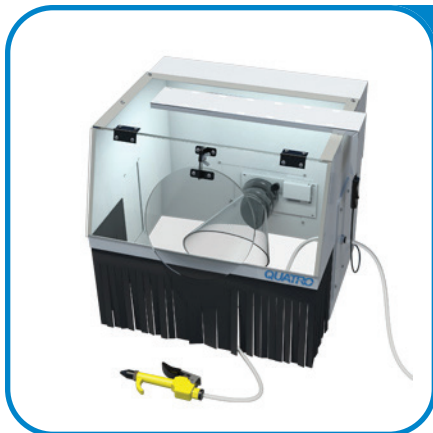
- » Powder coated heavy duty steel
- » Eliminates debris from breathing zone, contains all debris within enclosure
- » Side opening suited for working with a lathe
- » Ideal applications: where harmful debris containment is essential
- » Included: 1.5 in diameter inlet in rear (#M118)
- » Optional: 3" diameter slide-valve (#H397), 3" diameter inlet (#H162)
- » Also available: 2", 2.5", 4" diameter inlets

LED ClearView, Illuminated Workbench Containment Box

Connects to dust collector / purifier via 3 in diameter hose
Item #: AA004-3L

Dimensions (HxWxL): 15x15.5x14.25 in (38x39x36 cm)
Shipping Weight: 17 lb (8 kg)
Electrical: 100-120 V, 60 Hz, 0.3 A

- » Powder coated heavy duty steel
- » Eliminates debris from breathing zone, contains all debris within enclosure
- » Side opening suited for working with a lathe
- » Ideal applications: monomer odor, lathes, or any other application where debris containment is essential
- » PN AA004-3L, includes 3 in inlet (1.5 in, 2 in, 2.5 in 4 in inlets also available)
- » To add Slide-Valve to 3 in diameter inlet, purchase PN: AA197
- » Included: LED light (#AA190), 120 V PowerAdapter (#AA193), 3 in diameter inlet in rear (#H162)
- » Optional: 3 in diameter slide-valve installs inside (#AR197), ASV (#AA424 for 3 in hose connection)



Milling AirBox, Compressed air, LED Magnifier, Dust Collector Ready

Connects to dust collector via 1.5 in diameter hose
Item #: 2-0058-0010 (1.5 in diameter inlet, no valve)
Item #: 2-0058-0011 (1.5 in diameter inlet, ASV included)

Dimensions (HxWxL): 15x15.5x14.25 in (38x39x36 cm) · Shipping Weight: 17 lb (8 kg)
Electrical: 100-120 V, 50/60 Hz, 0.3 A

- » LED illuminated workbench containment cabinet, eliminates debris from breathing zone
- » Easy connection to dust collector and compressed air line
- » Compressed air line can be attached to either side of the cabinet
- » Hinged magnifier (7 in diameter, 2X magnification factor)
- » Adjustable source capture nozzle for efficient removal of fine particulate
- » Variable flow compressed air accessories* included: air gun, valve and tubing
- » "Push-to-connect" fitting for 1/4" diameter compressed air line
- » *ASV option: when used with appropriate QUATRO units, remotely starts-stops dust collector while you open/close the valve

LED AirBox, Illuminated Desktop Containment System

Keep a clean and healthy work environment by containing dust, odor and debris

Item #: AA266-1S+, Space-saving LED AirBox

Item #: AA266-2S+, Full-size LED AirBox

Dimensions (HxWxL): 14.5x24x17.5 in (37x61x45cm) (Space-saving Box)

Dimensions (HxWxL): 24x29x20 in (61x74x51cm) (Full-size Box)

- » Bright LED illuminated, with ON/OFF switch
- » LED can be installed on top or either side of box
- » Hinged doors swing up and away for easy access
- » Powder coated heavy duty steel
- » Connect to your dust collector via 1.5", 2", 2.5" or 3" diameter hose.
Please specify required diameter when placing the order.
- » Included: LED power adapter. Please specify country/voltage when placing the order.
- » Also available with integrated Automatic Start Valve or integrated Manual Slide Valve



Since 1991 QUATRO Air Technologies has been researching, designing and manufacturing high efficiency, portable and integrated air management solutions for commercial and industrial applications.

Working closely with engineers and professionals from a wide range of industries and services helped us deliver solutions that match the specific requirements of almost any sector.

Our air purification systems are indispensable tools for industries and processes generating high volumes of debris, ultra-fine particles, chemicals, VOC's and fumes: welding, soldering, laser marking, cutting and engraving, dental laboratories, jewelry and precious metals processing, digital, offset and large format printing.

